



ALVIC

Feel the innovation

NATURE AND ART

Some of the shades and palettes that will stand out in 2025 will be those that bring warmth, comfort and, above all, personality to spaces.

Neutral colors and blues inspired by nature that transmit calm and freshness.

Vibrant yellows inspired by the 70s, which bring energy and optimism to spaces.

Intense reds in all their variations, adding drama and passion to spaces. Used in small doses to highlight decorative elements.

Intense blues to bring elegance and sophistication, creating striking contrast with white, gold or wood elements.



BRIGHT NATURE

Dusty Rose

Lavender

Ice Blue

Amarillo Albero



VIBRANT NATURE AND ART



Coral



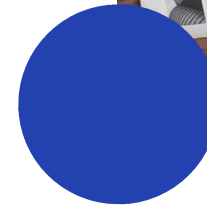
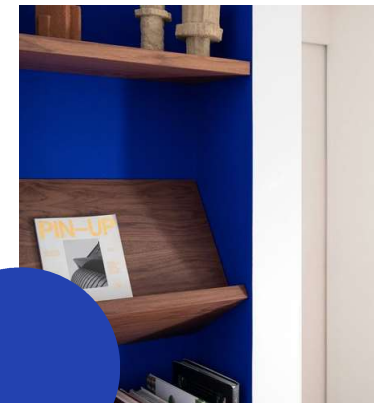
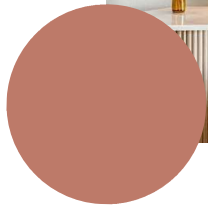
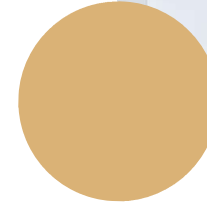
Rojo Pompei



Naranja Aperol



Azul Ultramar



LINEAR AND EXOTIC WOODS

Contrasting woods, always in warm tones, provide comfort to interior spaces. These woods stand out for their marked linearity and relaxing effect added to the color contrast of its grain and design that give personality and a differentiating touch to any environment.

In lighter shades to combine with more vibrant and striking colors.

Dark tones that make the perfect match with those more relaxed and neutral tones. Enhancing the beauty of wood in any environment.

MURILLO 01



MURILLO 02

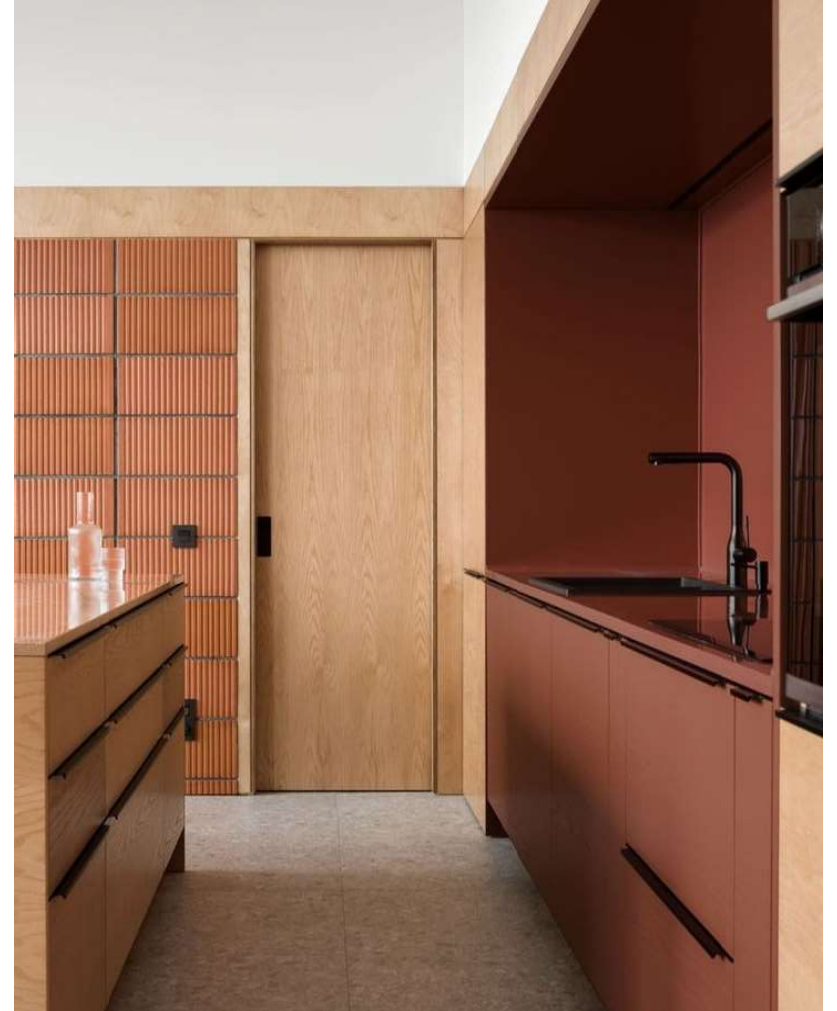


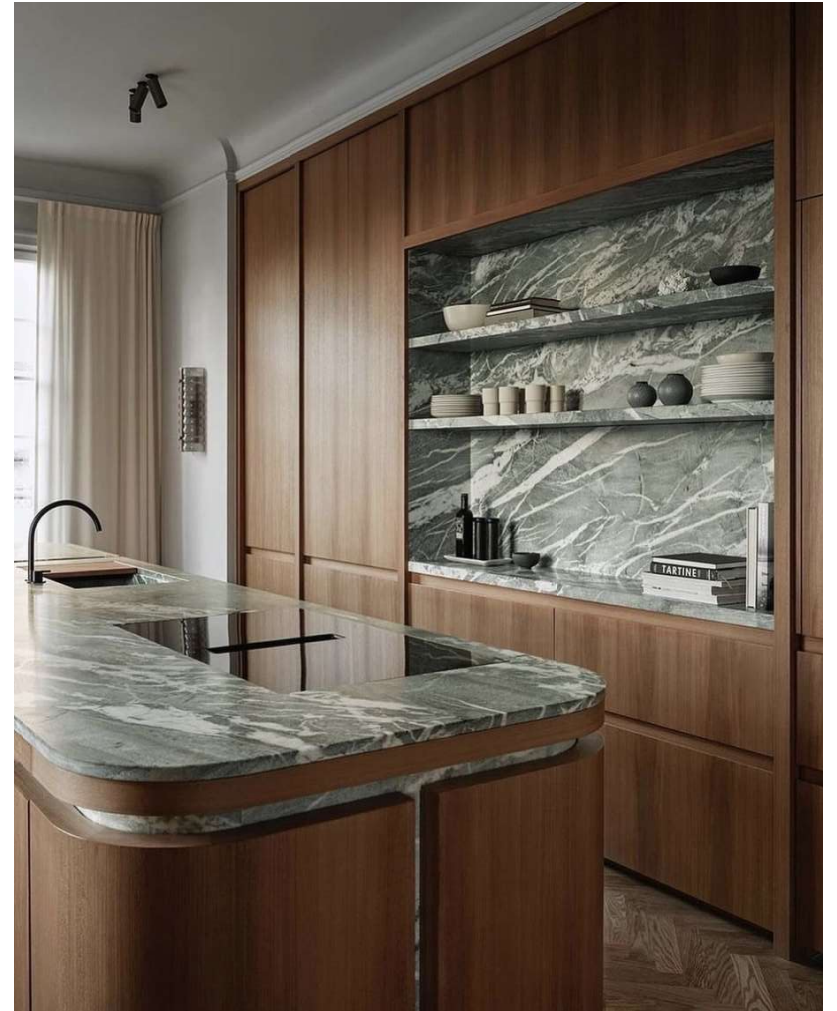
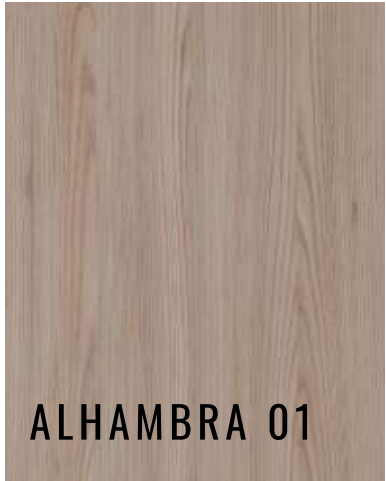
CLASSIC WOODS

Wood of large, marked and sinuous cathedrals that provide a differentiating design and depth to the environments through the furniture or decorative elements.

These woods in medium tones provide luminosity and a wide possibility of combinations with earth and red colors, as well as those more neutral and luminous.

NOGAL ROSALES 04

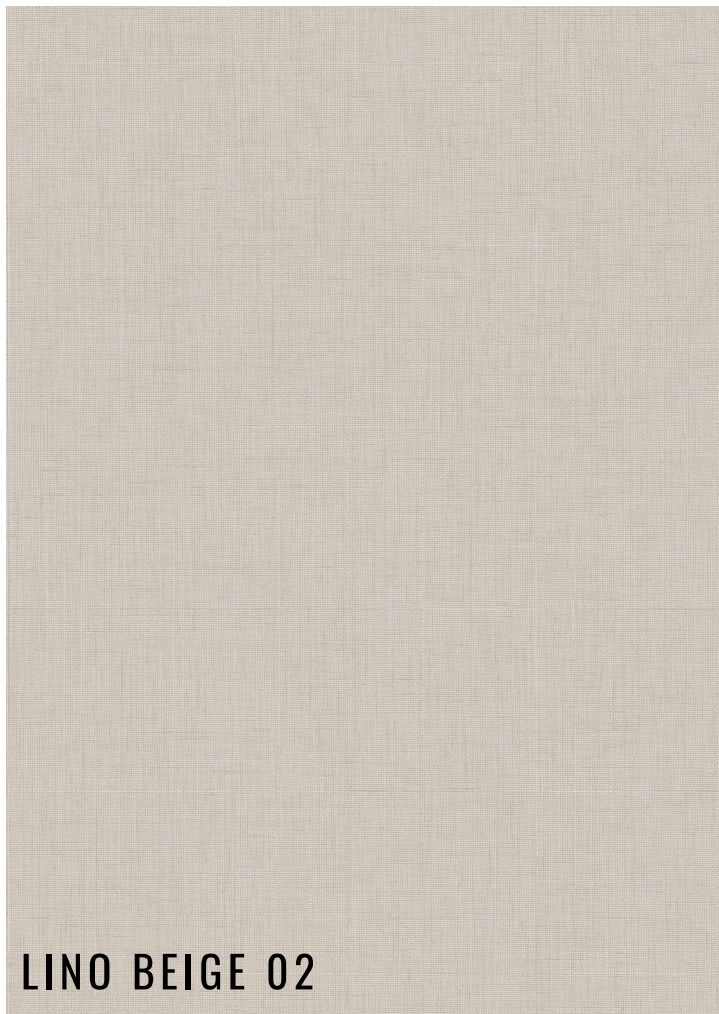
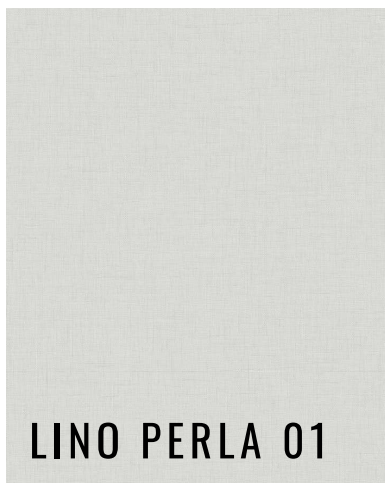
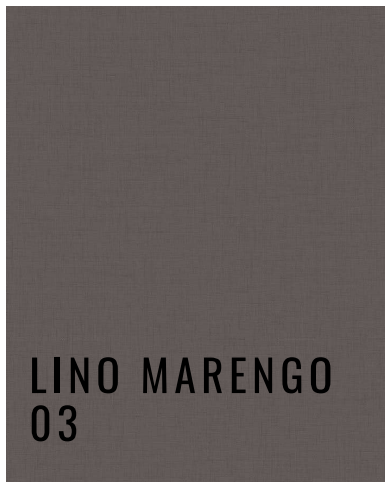




NATURAL MATERIALS

Japandi style materials inspired by nature that combine the serenity of Scandinavian design and Japanese minimalism. Designs that emphasize quality and comfort combining simplicity and functionality.

Linen is one of the main materials used by both stylistic currents to create enveloping environments combined with different materials and shades.



PRECIOUS NATURE

Mother-of-pearl, a material used since 3000 a.C.

Its demand grew in the 16th century for decorative and valuable items such as jewelry and art objects. It is still in demand today as a highly valued material for a variety of uses.

A material of unique character, shiny and iridescent.

Alvic has succeeded in creating an effect similar to this precious natural material thanks to its cutting-edge technology and a chemical reaction produced by superimposing layers, resulting in a unique product, without repetition an of a precious aesthetic value.

MOONLIGHT



AVAILABILITY OF TECHNOLOGIES / FINISHES BY COLOR:

- **Dusty Rose:** Zenit I Sincron_Dynamic
 - **Lavender:** Luxe I Zenit
 - **Ice Blue:** Luxe I Zenit I Sincron_Dynamic
 - **Amarillo Albero:** Luxe I Zenit
 - **Coral:** Luxe I Zenit
 - **Rojo Pompei:** Luxe I Zenit
 - **Naranja Aperol:** Luxe I Zenit I Sincron_Dynamic
 - **Azul Ultramar:** Luxe I Zenit

 - **Murillo 01:** Sincron_Nadir
 - **Murillo 02:** Sincron_Nadir

 - **Nogal Rosales 04:** Sincron_Registro

 - **Alhambra 01:** Zenit I Sincron_Nazarí
 - **Alhambra 02:** Zenit I Sincron_Nazarí
 - **Alhambra 03:** Zenit I Sincron_Nazarí
- **Lino 01 Perla:** Sincron_Ítaca
 - **Lino 02 Beige:** Sincron_Ítaca
 - **Lino 03 Marengo:** Sincron_Ítaca

 - **Moonlight:** Luxe I Zenit

The image is a collage of various interior design photographs, primarily focusing on modern kitchen and living spaces. The photos are arranged in a layered, overlapping fashion. The central focus is the brand name 'ALVIC' in a large, bold, black, sans-serif font. Below the brand name, the tagline 'Feel the innovation' is written in a smaller, black, sans-serif font. The collage includes images of kitchen islands with bar stools, open shelving units, minimalist kitchen cabinets in various colors (yellow, blue, white), and living areas with contemporary furniture. The overall aesthetic is clean, bright, and modern, with a focus on functional and stylish living environments.

ALVIC

Feel the innovation